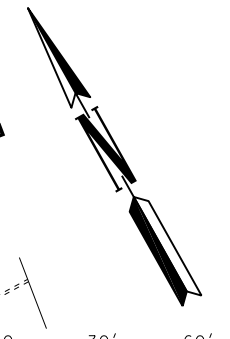
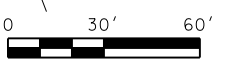
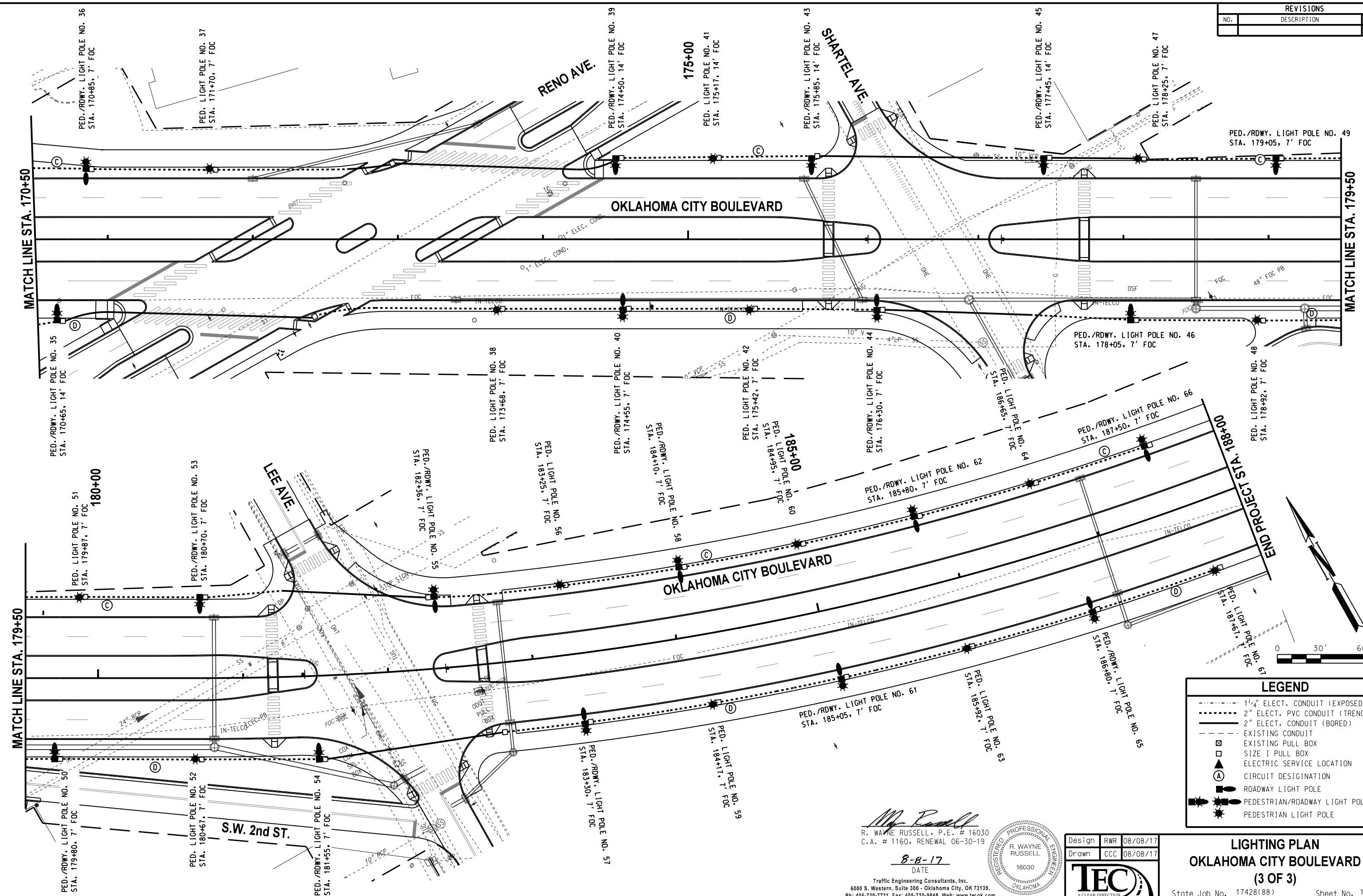


08/08/17 G:\0\Projects\17247A Downtown Blvd WP 5.1B Task 5\CAD\LIGHT BOULEVARD 3.dgn

REVISIONS		
NO.	DESCRIPTION	DATE

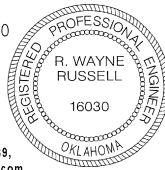


LEGEND	
	1 1/2" ELECT. CONDUIT (EXPOSED)
	2" ELECT. PVC CONDUIT (TRENCHED)
	2" ELECT. CONDUIT (BORED)
	EXISTING CONDUIT
	EXISTING PULL BOX
	SIZE I PULL BOX
	ELECTRIC SERVICE LOCATION
	CIRCUIT DESIGNATION
	ROADWAY LIGHT POLE
	PEDESTRIAN/ROADWAY LIGHT POLE
	PEDESTRIAN LIGHT POLE

R. Wayne Russell
 R. WAYNE RUSSELL, P.E. # 16030
 C.A. # 1160, RENEWAL 06-30-19

8-8-17
 DATE

Traffic Engineering Consultants, Inc.
 6000 S. Western, Suite 300 - Oklahoma City, OK 73139,
 Ph: 405-720-7721, Fax: 405-720-9848, Web: www.tecok.com



Design	RWR	08/08/17
Drawn	CCC	08/08/17



LIGHTING PLAN
OKLAHOMA CITY BOULEVARD
(3 OF 3)

State Job No. 17428(88) Sheet No. 167

OKLAHOMA COUNTY